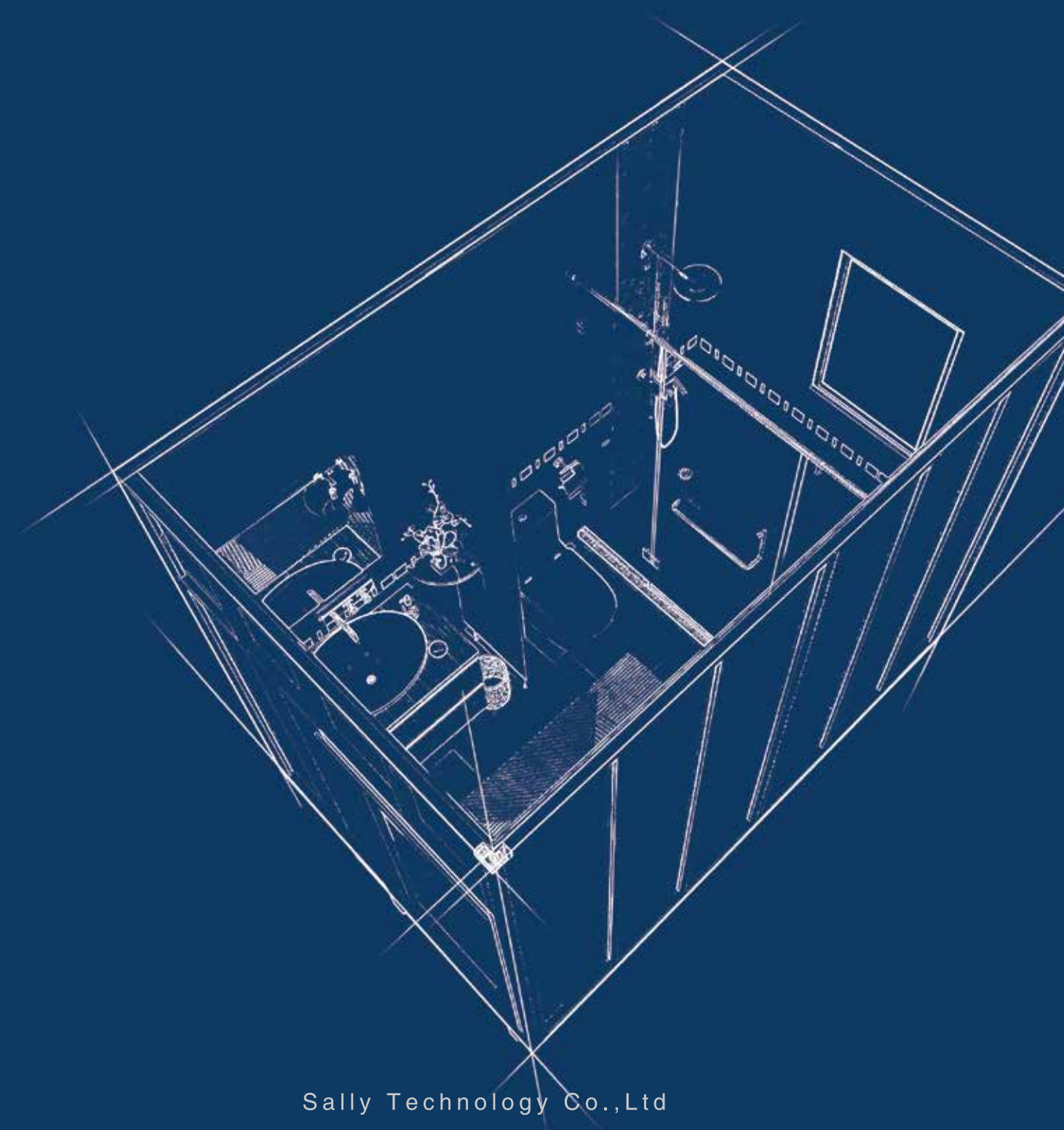


CATALOGUE 2017

BATHROOM PODS



SALLY®金莎丽

Sally Technology Co.,Ltd

Address: Nanlang industrial park,Nanlang town,Zhongshan city,Guangdong,China

Tel: +86-076085528537

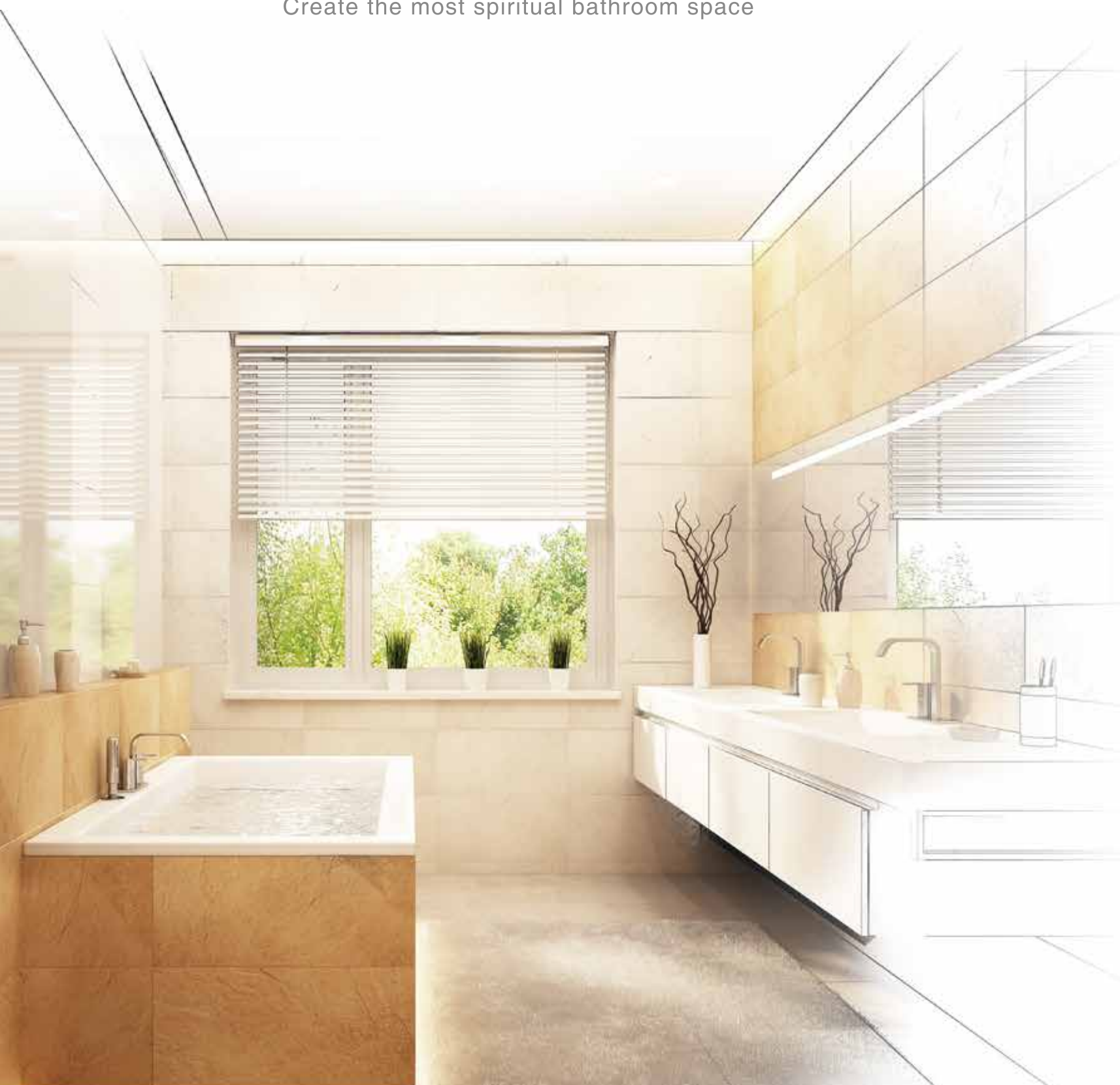
Email: sally20@china-sally.com

website: www.china-sally.com

Sally Technology Co.,Ltd

SALLY® Prefabricated Bathroom

Create the most spiritual bathroom space



Contents

Development trend of bathroom pod	03-04
The advantage of Sally GRC bathroom pod	05-06
Residencial series	07-14
Hotel series	15-20
Disabled special series	21-24
Product design details	25-26
Technology points	27-28
Installation details	29
Main material brand recommendation	30
Our services	31
Company introduction	32
Enterprise qualification	33-34



Development trend

of bathroom pod



The development of bathroom pods

Global sanitary manufacturing industry has formed an independent industrial chain. With the development of modern residential industry, integrated and industrialized sanitary products become the trends. Industrial production of the overall bathroom highlights the advantages of residential industry chain in the core components. Into the 21st century, the overall bathroom in the manufacturing and use of the process to focus on minimizing carbon dioxide emissions, making the product a step forward.The present family bathroom has been transformed from a simple toilet space and seek for urbanite feel comfortable and relaxed private places, the whole bathroom closely follow the pace of the times, mainly to meet the needs of the family to promote product development.



The advantages of bathroom pods

- Save site construction time. Two workers can install 3 sets of bathroom pods in one day.
- Completely prevent bathroom leakage, integral waterproof basin to ensure that there is no leakage risk
- Reduce the technical construction personnel,do not need experienced mud workers, tile workers and so on.
- Improve the quality of construction, factory assembly operations and the construction uniform norms to ensure that waterproof,hydroelectricity and other hidden points are expected in the factory ahead of time.
- Ensure the cleanliness of the construction environment and reduce the construction noise and construction waste.



Existing prefabricated bathroom



GRC

GRC (glass-fiber reinforced cement)



SMC





SMC (sheet molding compound)



FRP

FRP (Fiber Reinforce Plastic)

Sally bathroom pods adopts the GRC material which is a kind of fiber cement composite material with alkali-resistant glass fiber as the reinforcing material and cement mortar as the matrix material. Commonly used in building exterior decorative components, landscape engineering and other decorative shapes and strong performance of the occasion. GRC completely non-burning, light weight, easy to shape, good durability and strong resistance to humidity,it can be safe used for more than 60 years.

Comparison of different materials prefabricated bathroom					
Category		SMC	FRP	Aluminum honeycomb	GRC
Picture					
Structure	Main material	SMC	FRP	Aliminum +Fiberglass plate honeycomb+Sealant	GRC
	Size	3.8 square feet or less	Unlimited, adjustable steel girder to meet large area design requirements	Unlimited, adjustable steel girder to meet large area design requirements	Unlimited, can increase the strong gluten or increase the wire mesh to meet the large area design requirements
	Floor decoration material	SMC surface	Standard is FRP + rubber face, can be customized for floor of ceramic tile, rubber, plastic etc	can be customized for floor of ceramic tile, rubber, plastic etc	can be customized for floor of ceramic tile, rubber, plastic etc
Building Performance	Durability	25years	30years	12years	40years
	Cleaning resistance	Ba's hardness is about 70, easy to wear, difficult to clean	Pap's hardness is about 70, if don't do other surface treatment is easy wear, difficult to clean	Stick ceramic tile, Mohs 5, be more than the hardness of pap, convenient cleans	Stick ceramic tile, Mohs 5, be more than the hardness of pap, convenient cleans
	Flammability	B2 level combustible materials	B2 level combustible materials	B2 level combustible materials	A level noncombustible materials
	Water resistance	Water resistant	Water resistant	Waterproof by sealant	Waterproof
Installation	Height for different floor drainage	Between 120mm-240mm	Minimize 50mm	Minimize 50mm	Minimize 25mm
	Stampede sense	Empty sound, not practical	Empty sound, not practical	Empty sound, not practical	empty sound, feeling not practical
others	Partition wall	Need do partition wall	Need do partition wall	Need do partition wall	No need do partition wall



The introduction of Sally prefabricated bathroom



Overview

Using the traditional composite materials to make the overall structure to be Sally prefabricated bathroom compounded with traditional materials.Solid overall structure .Using GRC integral waterproof bottom basin ,the keel and cement fiber board on the wall ,main keel on the ceiling and ceramic tiles on the surface as a decoration.The structure layer and the functional layer are clear.The product is stable and strong ,good fire resistance and long durability .Outdoor can finish the partition with a cover board,reduce the construction cost of the partition wall and save room area.



Bottom basin introduction

The waterproof bottom basin using GRC as main material.Tiles, waterproof layer and adhesive layer formed by one mold. With the cement-based GRC and tile compatibility is excellent, the average tension of the tile above 1.0MPa, the combination of the two is extremely stable, no any gaps, no hollowing and other bonding quality problems as well.Before the bottom basin is formed, the waterproof part of the connection to the drain is buried, and it becomes one with the waterproof part. The waterproof flange and the drain pipe are sealed with EPDM sealing ring, the sealing structure of the mechanical connection makes the product without leakage risk, and is easy to repair later. The bottom basin uses regular deodorant to prevent the leakage, very convenient and post-maintenance.



Panel introduction

The wallboard is made of keel, cement fiber board and facing layer (tile). The keel of the screw frame is made of high strength, cold-bending, corrosion-resistant galvanized aluminum profiles.Cement fiber board uses waterproof and fireproof grade plates ,which can use up to 40 years.The screw connection between the cement and the keel is the structural layer without the hidden danger.Cement fiber board and decorative layer (tile) with cement-based materials, excellent compatibility, permeability is strong after using epoxy resin adhesive bonding, high degree of adhesion, excellent durability.

Building Performance	Waterproofness of bottom basin	The waterproof coating should be made according to the waterproof specification to ensure the waterproofness
	Wallboard waterproof	The splicing plate used a maze of waterproof structure and used EPDM type as the second waterproof structure.
	Combustibility	A level noncombustible materials
	Durability	The safe use life of bottom basin is more than 60 years and wallboardhas the same service life as the interior main structure(40years)
	Resistance to cleaning	Tile trim, high hardness, easy to clean
	Heat preservation performance	The wall can be filled with insulation cotton, the value of keal is 0.64W/㎡.k
	Sound Insulation performance	About 33DB



The characteristic of Sally bathroom pods

- The ground is solid, like the feeling stand on the concrete floor.
- The wall board has the keel component, can be used as the partition wall directly after the FC board, save the room space.
- Reduce the complex process with the traditional site construction, maximize the cost savings, improve working efficiency.
- Eliminate the risk of leakage.
- A level noncombustible structure materials.
- Wallboard can be use up to 40 years and bottom basin can be used for 60 years.
- For different construction requirements are divided into factory consolidation and on-site assembly of two forms:
 - 1, The panel and bottom basin are shipped to the site as a whole after the factory is assembled.
 - 2, Wall panels and basins made in the factory as a separate component, transported to the construction site and then assembled.



Site Assembly



Integral hoisting

Residencial

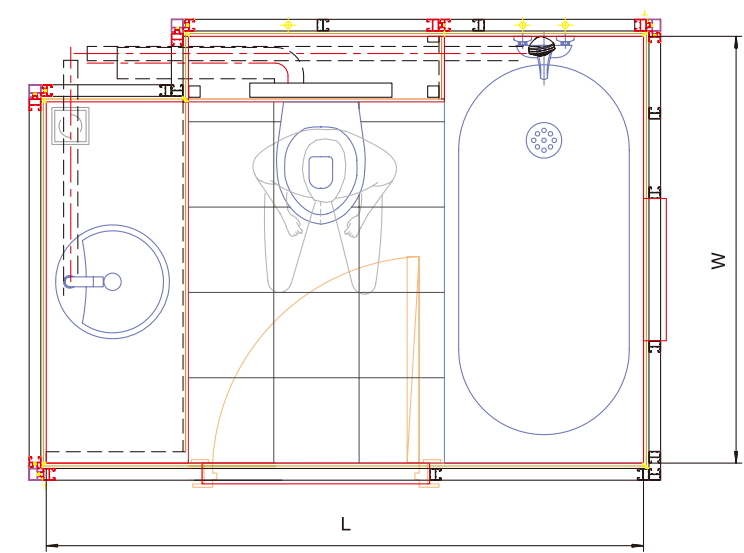
Series



Busy and compact urban life, here is the habitat that belongs to body and mind, to be quiet, private, comfortable. Simple atmosphere, quiet enjoy the city fashion; classic luxury, experience superior honor; personality retro, taste unique feelings. Sally bathroom pods is close to human design and offers a pleasant experience.

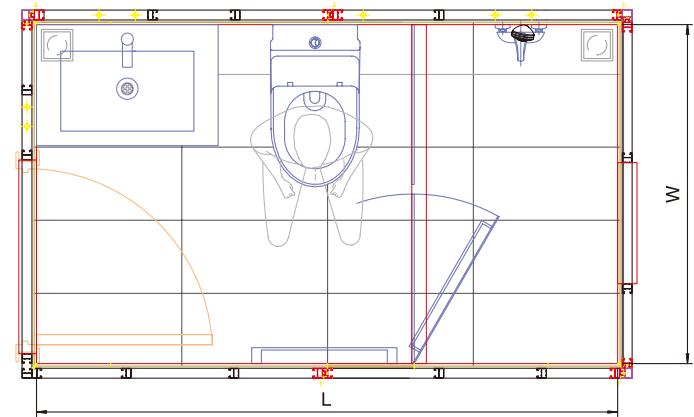
Type 1424 / Type 1818 / Type 1518 / Type 1521 / Type 1616 (caisson)

Residencial
Series

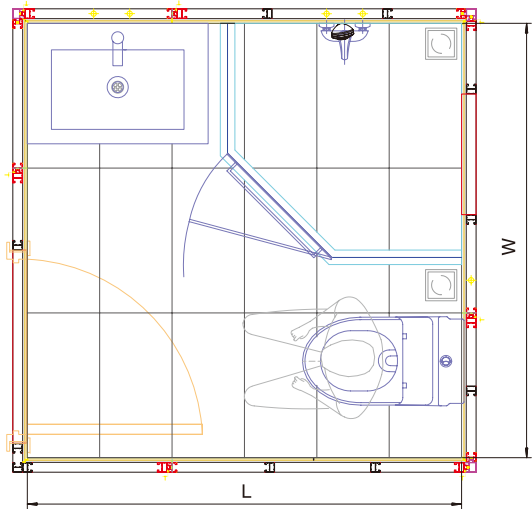


Type 1521

Model	Type 1512
Applicable building type	Ordinary residence, apartment, hotel
Installation method	Site assembly or Integral hoisting
Dimension	Customize size ,recommend L=2100mm,W=1500mm
Floor decoration materials	Suggested tile
Wall decoration materials	Stick tile or thin stone material
oilet drainage	Wall drain or floor drain, Wall drainage to tube well is recommended
Wash basin drainage	Wall drain or floor drain, Wall drainage to tube well is recommended
Floor drainage	Wall drain or floor drain, Wall drainage to tube well is recommended
Interior net height	2200mm-2300mm
Height of the installation requirement	≥ 2 2 8 0 m m
Depth of the occasion requirement	Wall drain ≥0mm;Floor drain ≥70mm



Type 1424



Type 1818

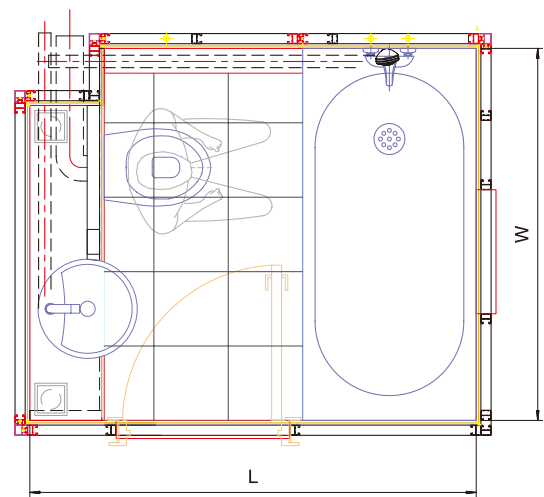
Residencial Series

Model	Type 1424	Type 1818
Applicable building type	Ordinary residence, apartment, hotel	
Installation method	Site assembly or Integral hoisting	
Dimension	Customize size ,recommend L=2400mm,W=1400mm	Customize size ,recommend L=1800mm,W=1800mm
Floor decoration materials	Suggested tile	
Wall decoration materials	Stick tile or thin stone material	
Toilet drainage	Wall drain or floor drain	Floor drain
Wash basin drainage	Wall drain or floor drain	Floor drain
Floor drainage	Wall drain or floor drain	
Interior net height	2200mm-2300mm	
Height of the installation requirement	≥ 2 2 8 0 m m	
Depth of the occasion requirement	Wall drain ≥0mm;Floor drain ≥70mm	Same layer ≥ 200mm

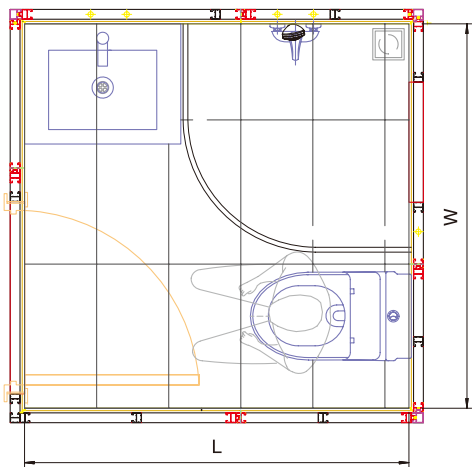




Residencial
Series



Type 1518



Type 1616 (a caisson)

Model	Type 1518	Type 1616
Applicable building type	Apartment, hotel	Ordinary residence, apartment, hotel
Installation method	Site assembly or Integral hoisting	
Dimension	Customize size ,recommend L=1800mm,W=1500mm	Customize size ,recommend L=1600mm,W=1600mm
Floor decoration materials	Ceramic tile, stone or floor glue	Suggested tile
Wall decoration materials	Stick tile or thin stone material	
Toilet drainage	Wall drain	Floor drain
Wash basin drainage	Wall drain	Floor drain
Floor drainage	Wall drain or floor drain, Wall drainage to tube well is recommended	Wall drain or floor drain
Interior net height	2200mm-2300mm	
Height of the installation requirement	≥ 2 2 8 0 m m	
Depth of the occasion requirement	Wall drain ≥0mm;Floor drain ≥70mm	Same layer ≥ 200mm

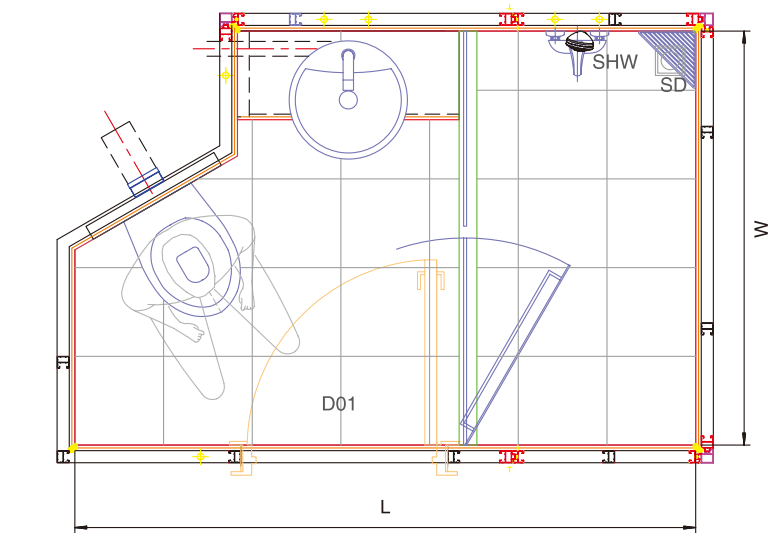


Hotel Series



It meets the needs of various hotels and can be perfectly fitted for all kinds of decorated styles. According to the style of hotel, Sally Bathroom Pods create the unique space of bathroom with high quality, elegance and best services.

Type 1218 (tubular well) / Type 1020 / Type 1421 (tubular well)



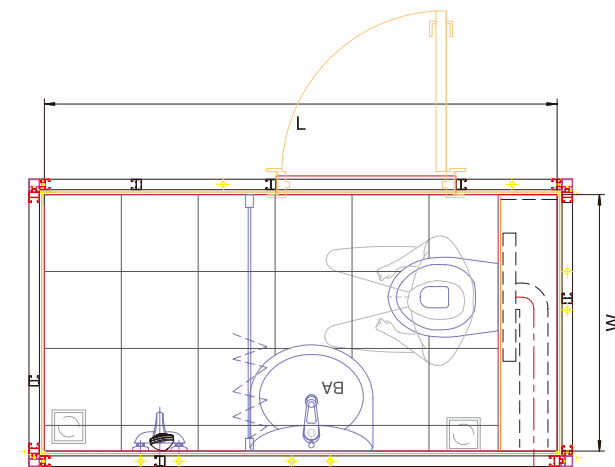
Type 1421 (tubular well)

Model	Type 1421
Applicable building type	Apartment, hotel
Installation method	Site assembly or Integral hoisting
Dimension	Customize size ,recommend L=2100mm,W=1400mm
Floor decoration materials	Suggested tile
Wall decoration materials	Stick tile or thin stone material
Toilet drainage	Wall drain
Wash basin drainage	Wall drain or floor drain, Wall drainage to tube well is recommended
Floor drainage	Wall drain or floor drain, Wall drainage to tube well is recommended
Interior net height	2200mm-2300mm
Height of the installation requirement	≥ 2 2 8 0 m m
Depth of the occasion requirement	Wall drain ≥0mm;Floor drain ≥70mm

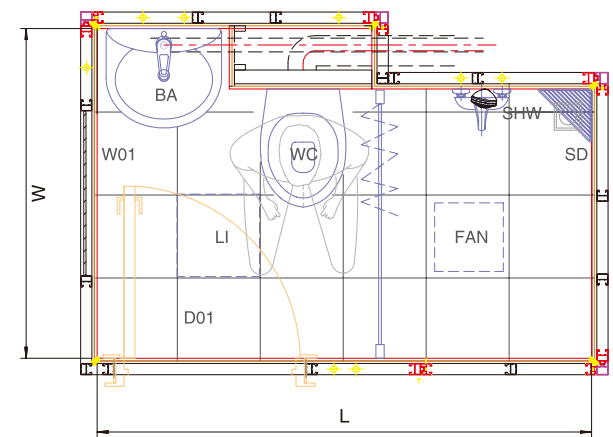




Model	Type 1020	Type 1218
Applicable building type	Hotel	Apartment,The chain hotel
Installation method	Site assembly or Integral hoisting	
Dimension	Customize size ,recommend L=2000mm,W=1000mm	Customize size ,recommend L=1800mm,W=1200mm
Floor decoration materials	Ceramic tile or floor glue	Suggested tile
Wall decoration materials	Stick tile or thin stone material	
Toilet drainage	Wall drain or floor drain, Wall drainage to tube well is recommended	
Wash basin drainage	Wall drain or floor drain, Wall drainage to tube well is recommended	
Floor drainage	Wall drain or floor drain, Wall drainage to tube well is recommended	
Interior net height	2100mm-2200mm	2200mm-2300mm
Height of the installation requirement	≥ 2180mm	≥ 2280mm
Depth of the occasion requirement	Wall drain ≥0mm;Floor drain ≥70mm	



Type 1020



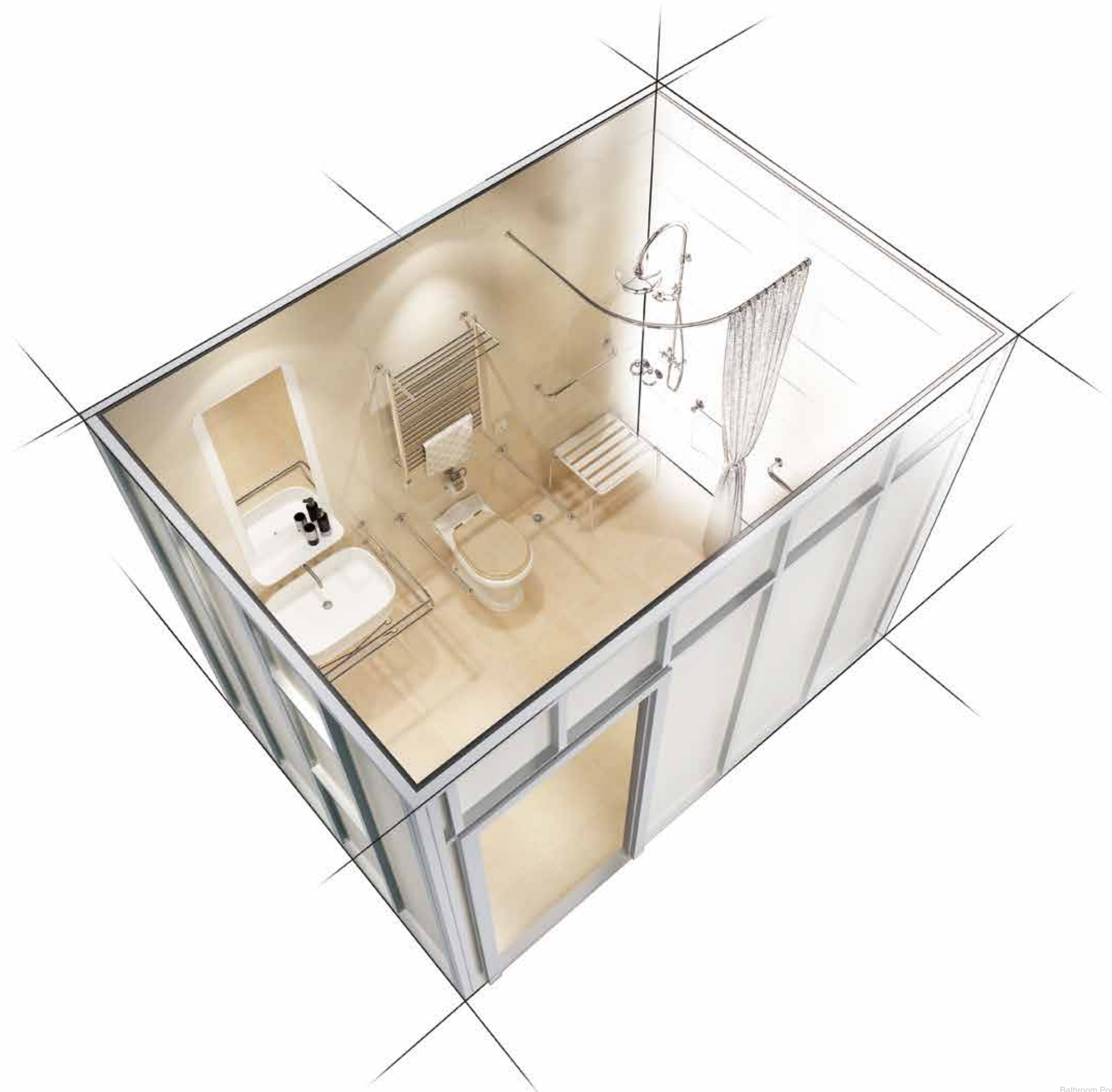
Type 1218 (tubular well)

Disabled special

Series

The combination of technology and art fulfill the humanization design.
Sally bathroom pods create the barrier-free space for maximization of practicality and beauty.
The humanization design is visible. Sally is customer oriented and concern about every detail and individual demand.

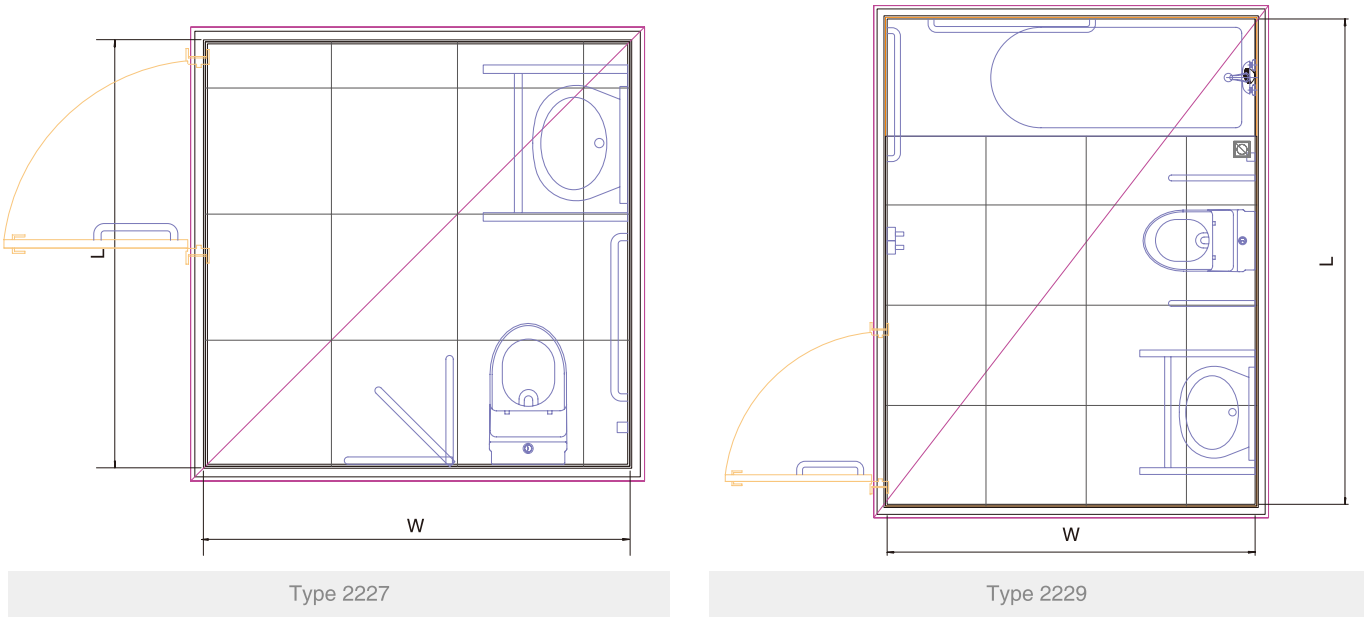
Type 2229 / Type 2227





Disabled special

Series

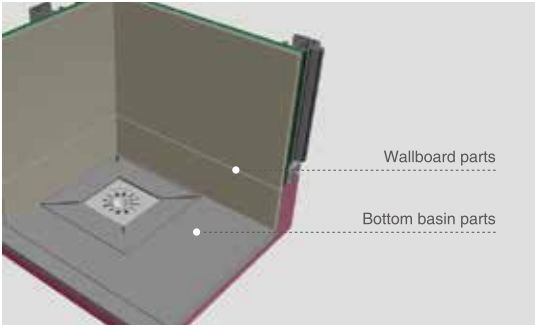


Model	Type 2229	Type 2227
Applicable building type	The handicapped room, the hospital, the nursing home	
Installation method	Integral hoisting	
Dimension	Customize size ,recommend L=2900mm,W=2200mm	Customize size ,recommend L=2000mm,W=2000mm
Floor decoration materials	Ceramic tile	
Wall decoration materials	Stick tile or thin stone material	
Toilet drainage	floor drain	
Wash basin drainage	floor drain	
Floor drainage	floor drain	
Interior net height	2200mm-2300mm	
Height of the installation requirement	≥ 2 2 8 0 m m	
Depth of the occasion requirement	Same layer ≥ 200mm	

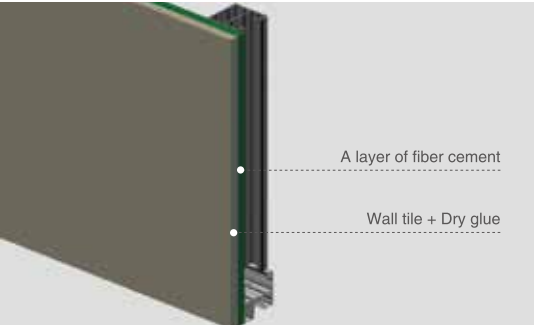




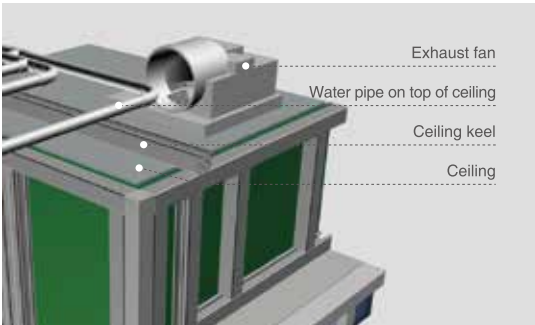
Product structure details - Structure composition



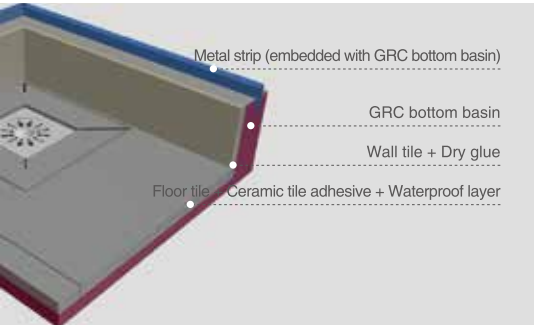
Basin and wall structure



Parts of wall structure



Ceiling local structure

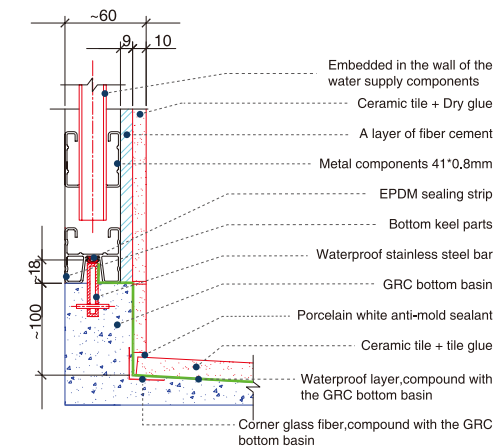


Bottom basin parts structure

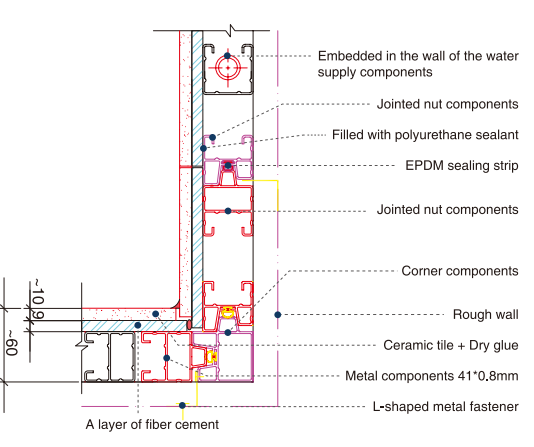


Product structure details - Structure node

Construction method is structured waterproof. It does not require any waterproof construction at the scene. After the installation of tiles, it only need to do the gap beautification.



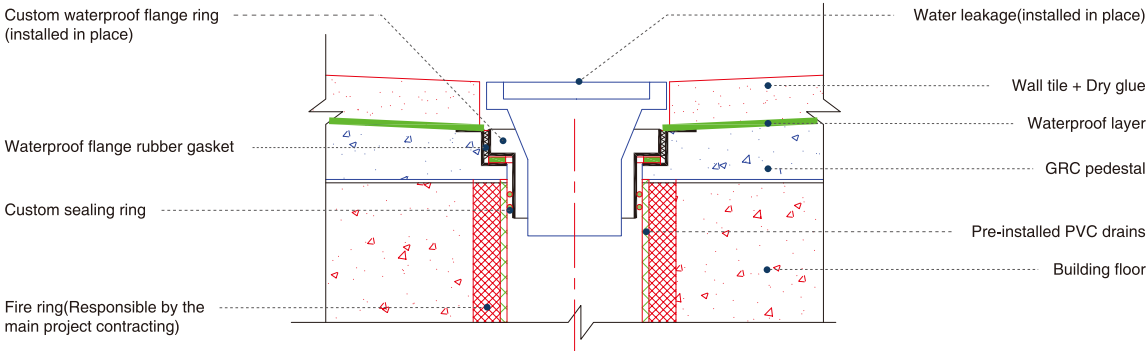
Waterproof structure between the ground and wall



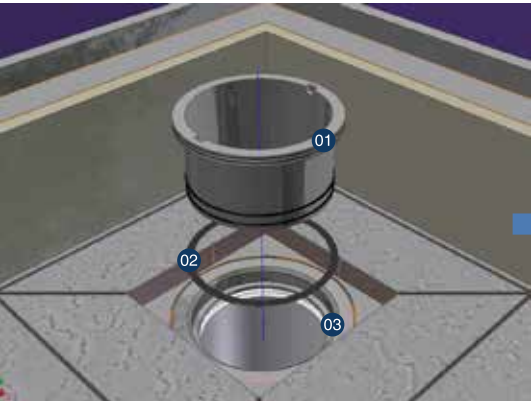
Waterproof structure between the ground and wall



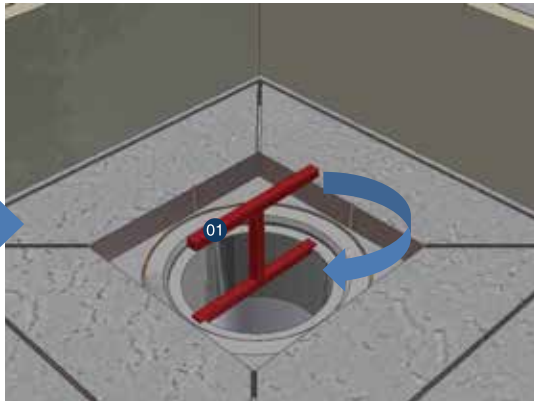
Product structure details –Waterproof of Bottom basin drainage



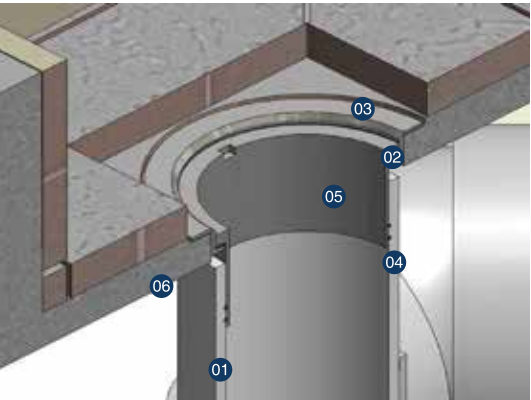
Floor drain over waterproof structure



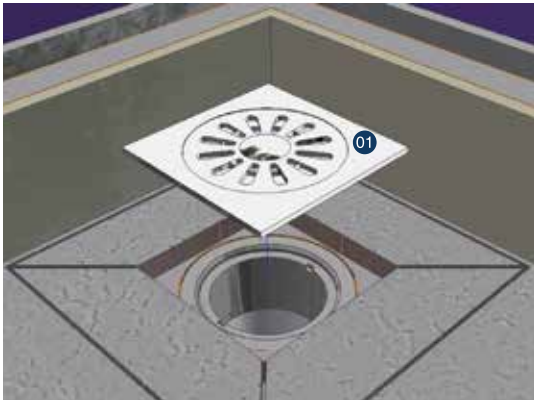
- 01 Waterproof flange-the bottom of the pressure ring with the thread is sealed
- 02 Waterproof flange -rubber gasket
- 03 Waterproof flange -the bottom ring is embedded in the GRC



- 01 Waterproof flange -Pressure ring installation tool



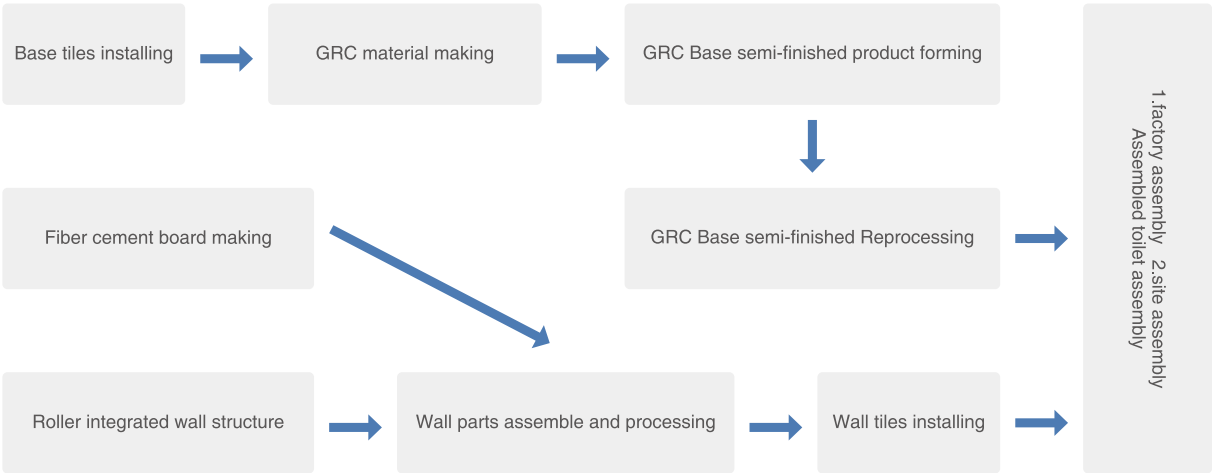
- 01 The drain pipe is placed on the caisson in the bottom basin
- 02 Waterproof flange -rubber gasket
- 03 Waterproof flange -the bottom ring is embedded in the GRC
- 04 The bottom of the ring is sealed
- 05 Waterproof flange -threaded ring
- 06 GRC bottom basin



- 01 Ordinary floor drain(as with traditional installation, install on the base with waterproof glue)



Production Process



As it is factory assemble line and the construction of a unified standard, every link has been quality controlled. After all kinds of testing in factory, the qualified product will be sent to the project site.



GRC water test



Water supply pressure test

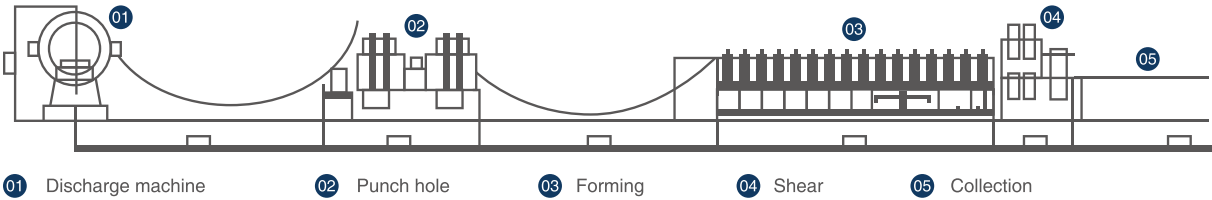


Ceramic tile drawing force test



Production equipment

The use of advanced production equipment, product technology by the computer program equipment, product production quality is stable and reliable, there is no artificial construction technology level and the quality of the product is not uniform.



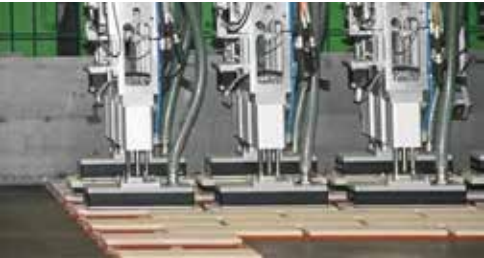
Full automatic section cold bending forming equipment



Data four axis design



Automatic gluing equipment



Automatic ceramic tile equipment

Installation

details



Prefabricated drains installation



Base installation



Sally waterproof flange installation



Wall installation



Waterpipe installation



Skeleton and Ceiling installation



Clapboard installation by third party(FC board available)



Gap between wall and base sealing



Gap between walls sealing

Main material

brand recommendation

Ceramic tiles Adhesive, Waterproofing Materials



Davco
德高建材



Cement fiberboard



Shower room

Ceramic tiles

SALLY 金莎丽

MARCO POLO 马可波罗磁砖
陶瓷中的世界名作

MONALISA 蒙娜丽莎

- Wall Skeleton : 0.8mm 550Mpa high strength roller Steel and heated Zinc alloy processing;
- Wall: 9mm waterproof fiber cement board. Meet JC/T 564.1-2008;
- GRC Base: EU Standard BSEN etc;
- Waterproof material: by Davco etc;
- Ceramic tiles Adhesive: by Davco etc;
- Tiles: 6mm or Customize;
- Waterpipe : GB PPR, Branch DN20, Main DN25, by LESSO etc;
- Drainer: GB PVC, Closestool DN1100, Sewer DN75, by LESSO etc;
- Ceiling : 9mm Integrated wood or aluminium alloy.



Ordering process

ONE

Sales staff understand the requirement of customers and product positioning.

TWO

Designer communicate with customers in 2 days to confirm the following items: Product detail, Installation method, Design, Material and Material purchasing method.

THREE

After the confirmation with party A. The main body production takes 6 days (exclude customize parts). Installation takes only 4 hours.

FOUR

After signing the contract, Batch production and installation are in 30 days. The installation and delivery are arranged later.



Attention



Drainage installation,
Sally provide Same floor drainage installation and Different floor drainage installation

When the same floor drainage installation is selected , the main body should have the space for sewer of toilet.

- The depth caisson for Horizontal setting type toilet is 70mm at least.
- The depth caisson for bottom platoon type toilet is 200mm at least.



Sally provide waterproof base for bottom platoon type toilet

- When the side drain and side toilet are selected. Caisson is not necessary.



Sally bathroom pods wall can be the partition wall.



Sally prsentation

Sally Technology Co., Ltd founded in 1998 is modern enterprise and specialized in R&D, manufacturing, marketing and services in integrated circulating heater, shower room, bathtub, bathroom cabinet, invisible fence and bathroom pods. Since inception, SALLY always focus on the bathroom and commit to the establish of "the world's advanced brand in bathroom". SALLY is located in Zhongshan, Guangdong and covers an area of 40,000 square meters. SALLY has 13 modern production lines. there are more than 300(set) production machines and product testing machines. The annual production capacity reaches about 500 thousand pieces(set). SALLY gains a series prize such as high-tech Enterprise, Guangdong Well-known Enterprise, China Well - known and Excellent Product Enterprise, National 4A Quality and Good Service of Reputation Enterprise, Guangdong Excellent Export Enterprise, Guangdong 500 Enterprise in manufacturing. In 2004, SALLY became vice president in the shower room industry association and model of industry standard.



Perfect quality system

Sally up hold the fashion, superior, leading design concept, adhere to the service principle of customer first, has the courage to take social responsibility, keep making progress, pioneering and innovating, pursuing excellence and always leading the industry development trend. In 2001,Sally passed a number of international authority certification like GS of German TUV,CE,CUPC etc. In 2005,we cooperate with Guangzhou Ou Bo Enterprise Development Institute and make internal process reengineering to achieve a modern enterprise management model.In 2007,we launched electronically controlled and color changing shower room and set up a new benchmark for color changing shower room; In 2016,we launched the bathroom pods, which lead the new trend of development of the building decoration industry, widely praised by the government, the industry and consumers.



